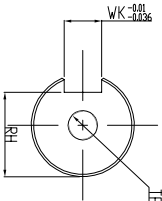
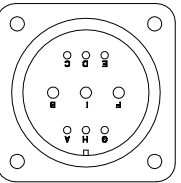
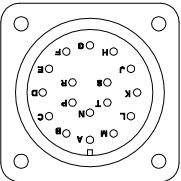
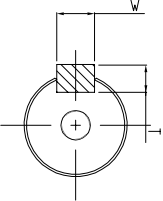


MODEL	LL	LR	LS	LV	S	LV	WK	V	T	RH	TP
ECMA-E□1310□4	147.5	55	47	36	24	---	8	8	7	20	---
ECMA-E□1310□S	147.5	55	47	36	22	---	8	8	7	18	---
ECMA-E□1310CS	147.5	55	47	---	22	---	---	---	---	---	---

DIMENSION TABLE (MODEL WITHOUT BRAKE)



SHAFT END DETAILS



KEY DETAILS

ENCODER CONNECTOR			
PIN	FUNCTION	PIN	FUNCTION
1	2500ppr 20bit	1	2500ppr 20bit
2	A	2	A
3	A	3	A
4	A	4	A
5	A	5	A
6	A	6	A
7	A	7	A
8	A	8	A
9	A	9	A
10	A	10	A
11	A	11	A
12	A	12	A
13	A	13	A
14	A	14	A
15	A	15	A
16	A	16	A
17	A	17	A
18	A	18	A
19	A	19	A
20	A	20	A
21	A	21	A
22	A	22	A
23	A	23	A
24	A	24	A
25	A	25	A

PIN	FUNCTION
1	A
2	A
3	A
4	A
5	A
6	A
7	A
8	A
9	A
10	A
11	A
12	A
13	A
14	A
15	A
16	A
17	A
18	A
19	A
20	A
21	A
22	A
23	A
24	A
25	A

REV.	ECN NO.
V1.0	

Drawn:	Design:
Date:	ECN No.:

THESE DRAWINGS AND SPECIFICATIONS ARE THE PROPERTY OF DELTA ELECTRONICS, INC. AND SHALL NOT BE REPRODUCED OR USED AS THE BASIS FOR THE MANUFACTURE OR SELL OF APPARATUS OR DEVICES WITHOUT PERMISSION.			
Drawing Name: ECMA-E□1310□□			
Part No.:			
REV.			

USED ON	XXXXXX	UNIT	mm	SCALE	1:1	SHEET 1 OF 1	REV.
A3							V1.0