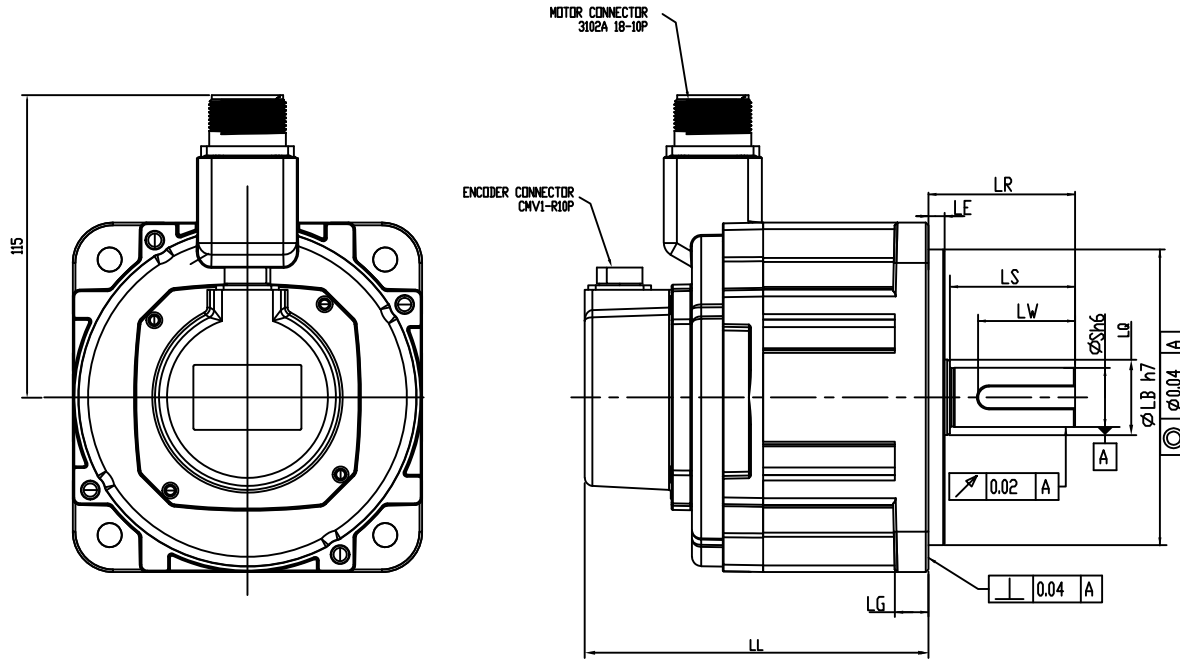


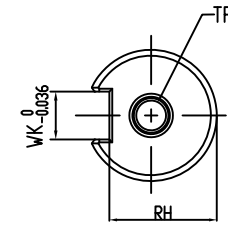
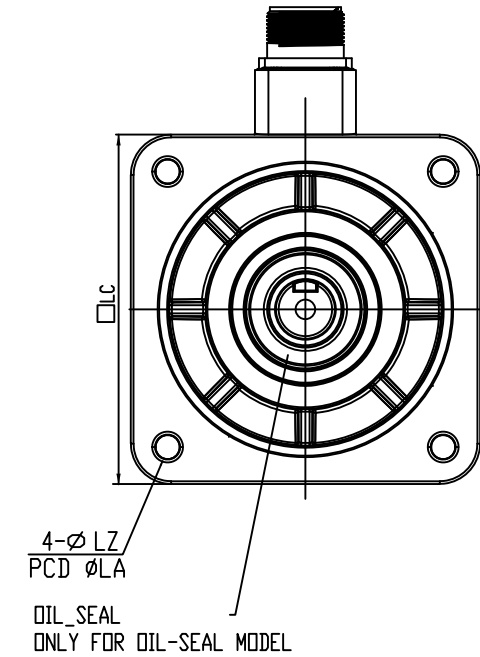
A

B

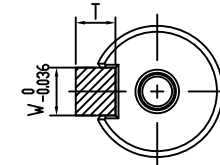
C



MODEL	LC	LZ	LA	S	LB	LL	LS	LR	LE	LG	LW	RH	WK	W	LQ	T	TP
ECM-E3M-E□1310RSE	130	9	145	22	110	127.9	47	55	6	12.5	36	18	8	8	28	7	M6 , Depth 12
ECM-E3M-E□1315RSE	130	9	145	22	110	139.9	47	55	6	12.5	36	18	8	8	28	7	M6 , Depth 12
ECM-E3M-E□1320RSE	130	9	145	22	110	151.9	47	55	6	12.5	36	18	8	8	28	7	M6 , Depth 12



SHAFT END DETAILS



KEY DETAILS

REV. ECN NO.

A

B

C

 台灣電子工業股份有限公司 DELTA ELECTRONICS, INC.		DRAWN:		DESIGN:	
APPROVE:		DATE: 03/28/2022			
THESE DRAWINGS AND SPECIFICATIONS ARE THE PROPERTY OF DELTA ELECTRONICS, INC. AND SHALL NOT BE REPRODUCED OR USED AS THE BASIS FOR THE MANUFACTURE OR SELL OF APPARATUS OR DEVICES WITHOUT PERMISSION.		DIMENSIONAL TOLERANCES ( ) ( ) ( ) DECIMALS <50 :±0.1 <50 :±0.15 <50 :±0.2 <30° :±0.1° X :±0.3 >50-100 :±0.15 >50-100 :±0.2 >50-100 :±0.25 >30°-60° :±0.3° X.X :±0.2 >100-200 :±0.2 >100-200 :±0.25 >100-200 :±0.3 >60°-90° :±0.5° X.XX :±0.1 >200- :±0.2% >200- :±0.25% >200- :±0.3%		ANGLES	
DESCRIPTION: CONFIDENTIAL MOTOR-F130		A3 SIZE THIRD ANGLE PROJECTION		PART NO.:	
USED ON		UNIT mm		SHEET 1 OF 1	
				REV. 00	

1

2

3

4

DF-MEA3H-3R02