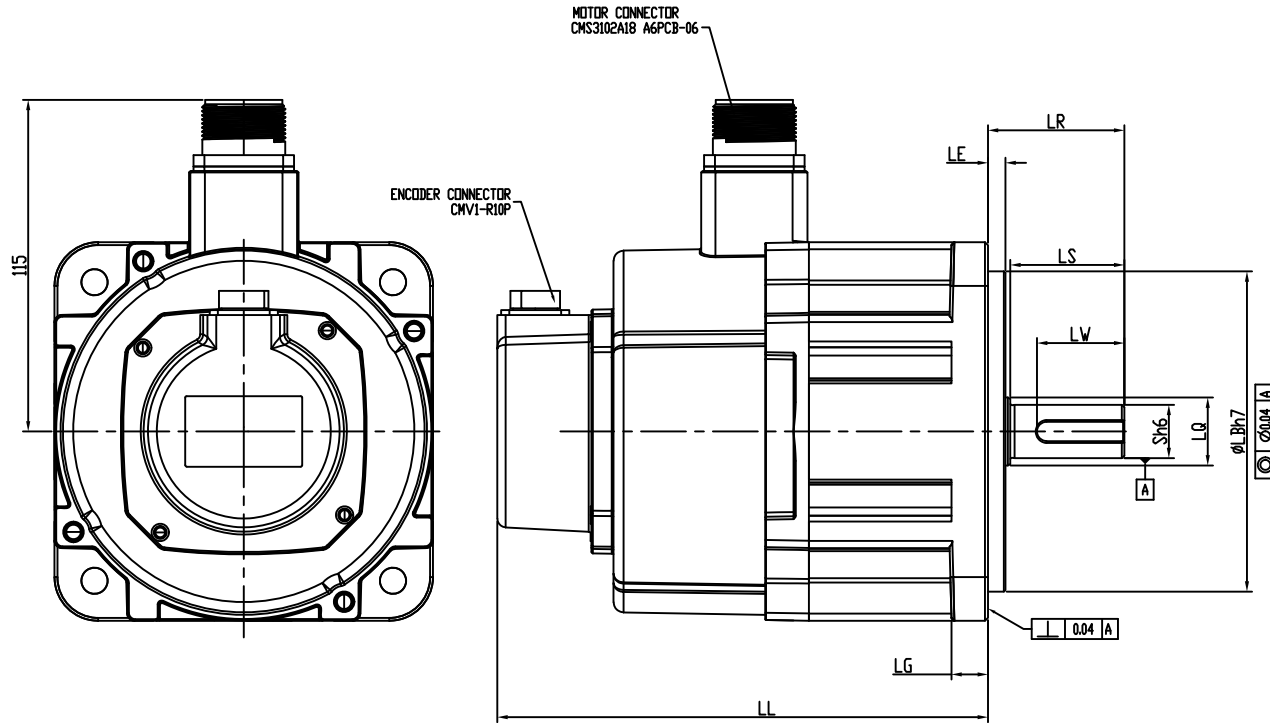


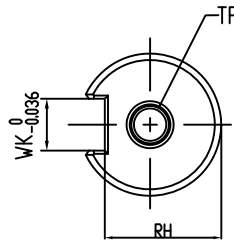
A

B

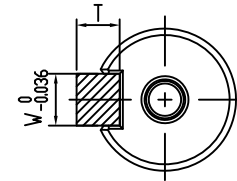
C




MODEL	LC	LZ	LA	S	LB	LL	LS	LR	LE	LG	LW	RH	WK	W	LQ	T	TP
ECM-E3M-E□1310SSE	130	9	145	22	110	168.5	47	55	6	12.5	36	18	8	8	28	7	M6, Depth 12
ECM-E3M-E□1315SSE	130	9	145	22	110	180.5	47	55	6	12.5	36	18	8	8	28	7	M6, Depth 12
ECM-E3M-E□1320SSE	130	9	145	22	110	192.5	47	55	6	12.5	36	18	8	8	28	7	M6, Depth 12



SHAFT END DETAILS



KEY DETAILS

 台達電子工業股份有限公司 DELTA ELECTRONICS, INC.		DRAWN:		DESIGN:	
APPROVE:		DATE: 03/28/2022			
THESE DRAWINGS AND SPECIFICATIONS ARE THE PROPERTY OF DELTA ELECTRONICS, INC. AND SHALL NOT BE REPRODUCED OR USED AS THE BASIS FOR THE MANUFACTURE OR SELL OF APPARATUS OR DEVICES WITHOUT PERMISSION.		DIMENSIONAL TOLERANCES ( ) ( ) ( ) ( ) DECIMALS <50 :±0.1 <50 :±0.15 <50 :±0.2 <30° :±0.1° X :±0.3 >50-100 :±0.15 >50-100 :±0.2 >50-100 :±0.25 >30°-60° :±0.3° X.X :±0.2 >100-200 :±0.2 >100-200 :±0.25 >100-200 :±0.3 >60°-90° :±0.5° X.XX :±0.1 >200- :±0.2 >200- :±0.25 >200- :±0.3		ANGLES	
DESCRIPTION: MOTOR-F130		PART NO.:		REV.	
USED ON:		UNIT: mm		SHEET 1 OF 1	

1

2

3

4