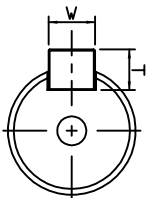
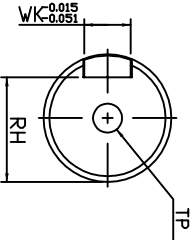


DIMENSION TABLE (MODEL WITHOUT BRAKE)

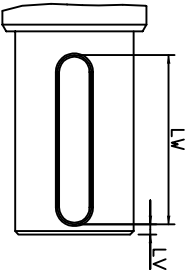
MODEL	LL	LR	LS	LW	S	LV	WK	V	T	RH	TP
ECMA-CI1020ES	199	45	37	32	22	—	8	8	7	18	—
ECMA-CI1020GS	199	45	37	32	22	—	8	8	7	18	—



KEY DETAILS

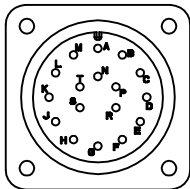
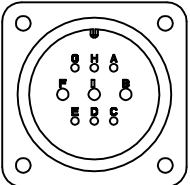


SHAFT END DETAILS




ALTERNATIVE SHAFT KEYWAY TYPE

PIN	FUNCTION
A	—
B	W PHASE
C	—
D	—
E	GND
F	U PHASE
G	—
H	—
I	V PHASE



ENCODER CONNECTION			
PIN	FUNCTION	PIN	FUNCTION
A	2500ppr	20	20kΩ
B	20kΩ	21	20kΩ
C	20kΩ	22	20kΩ
D	20kΩ	23	20kΩ
E	20kΩ	24	20kΩ
F	20kΩ	25	20kΩ
G	20kΩ	26	20kΩ
H	20kΩ	27	20kΩ
I	20kΩ	28	20kΩ
J	20kΩ	29	20kΩ



台達電子工業股份有限公司
DELTA DELTA ELECTRONICS, INC.

Drawn: _____

Date: _____

Design: _____

ECN No.: _____

THESE DRAWINGS AND SPECIFICATIONS ARE THE PROPERTY OF DELTA ELECTRONICS, INC. AND SHALL NOT BE REPRODUCED OR USED AS THE BASIS FOR THE MANUFACTURE OR SELL OF APPARATUS OR DEVICES WITHOUT PERMISSION.

Drawing Name: ECMA-C□1020□S

Part No.: _____

REV. _____

USED ON XXXXXX

UNIT mm

SCALE 1:1

SHEET 1 OF 1

REV. V1.0