

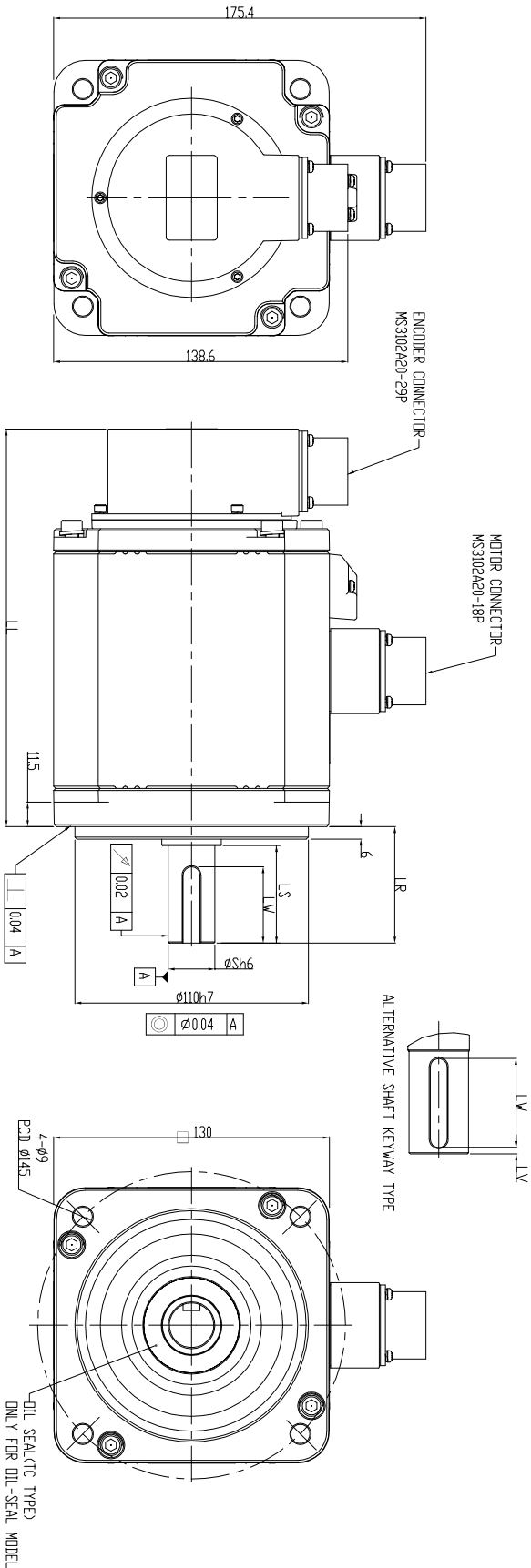
1

2

3

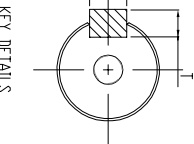
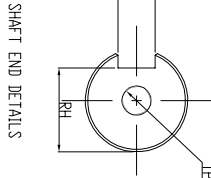
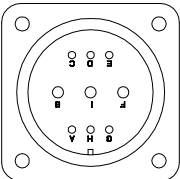
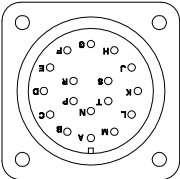
4

REV.	ECN NO.
V1.0	



DIMENSION TABLE (MODEL WITH BRAKE)

MODEL	LL	LR	LS	LV	S	LV	WK	V	T	RH	TP
ECMA-E□1310□4	1835	55	47	36	24	---	8	8	7	20	---
ECMA-E□1310□5	1835	55	47	36	22	---	8	8	7	18	---



ENCODER CONNECTOR			
PIN	FUNCTION	PIN	FUNCTION
1	2500ppr 20bit	1	2500ppr 20bit
2	A	2	A
3	A+	3	A+
4	T+	4	T+
5	K	5	K
6	L	6	L
7	SHIELD	7	SHIELD
8	B	8	B
9	B+	9	B+
10	BAT_5V	10	BAT_5V
11	M	11	M
12	---	12	---
13	D	13	D
14	BAT_GND	14	BAT_GND
15	N	15	N
16	---	16	---
17	E	17	E
18	---	18	---
19	F	19	F
20	Z	20	Z
21	---	21	---
22	S	22	S
23	DC+5V	23	DC+5V
24	DC+5V	24	DC+5V
25	---	25	---
26	---	26	---
27	---	27	---
28	---	28	---
29	---	29	---
30	---	30	---

MOTOR CONNECTOR	
PIN	FUNCTION
1	---
2	A
3	W PHASE
4	---
5	C
6	D
7	---
8	E
9	GND
10	F
11	U PHASE
12	G
13	BRAKE
14	H
15	BRAKE
16	I
17	V PHASE

DELTA 台達電子工業股份有限公司  
DELTA ELECTRONICS, INC.

Drawn: Design: ECN No.: Date:

THESE DRAWINGS AND SPECIFICATIONS ARE THE PROPERTY OF DELTA ELECTRONICS, INC. AND SHALL NOT BE REPRODUCED OR USED AS THE BASIS FOR THE MANUFACTURE OR SELL OF APPARATUS OR DEVICES WITHOUT PERMISSION.

DIMENSIONAL TOLERANCES											
( )	( )	( )	( )	( )	( )	( )	( )	( )	( )	( )	( )
DECIMALS	<50	<50	<50	<50	<50	<50	<50	<50	<50	<50	<50
X	:±0.3	>50-100	:±0.15	>50-100	:±0.2	>50-100	:±0.25	>50-100	:±0.3	>50-100	:±0.3
X.X	:±0.2	>100-200	:±0.2	>100-200	:±0.25	>100-200	:±0.3	>100-200	:±0.3	>100-200	:±0.3
X.XX	:±0.1	200~	:±0.2%	200~	:±0.25%	200~	:±0.3%	200~	:±0.3%	200~	:±0.3%

Drawing Name: ECMA-E□1310□□

Part No.: REV.

USED ON XXXXXX UNIT mm SCALE 1:1 SHEET 1 OF 1 V1.0

1

2

3

4